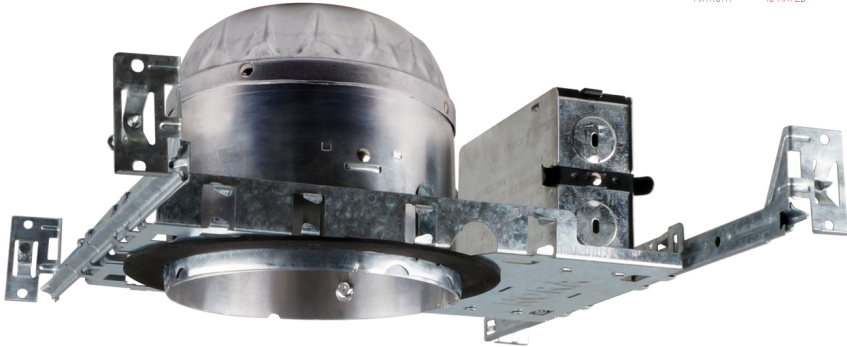
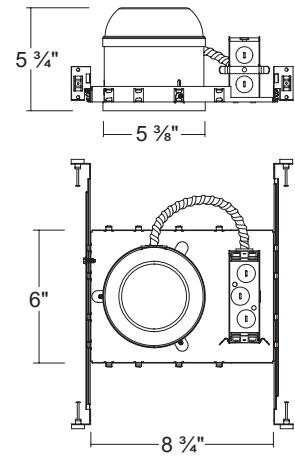


LED500SICA / LED500SICA-01V

5" IC Air-Tight LED Dedicated Shallow New construction Housing



Dimensions



SPECIFICATION

Plaster Frame

- Galvanized steel construction. The housing can be removed from plaster frame to provide access to the junction box

Junction Box

- Listed for through branch circuit wiring
- Contains seven 7/8" knockouts
- New Cable Trap for easy installation of Romex Cable (US Patented / China Patented)

Bar Hanger

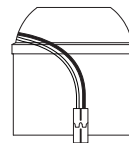
- Pre-installed Real nail easily installs in regular lumber, engineered lumber
- Bar Hangers are adjustable from 13-5/8" to 25" and can be repositioned 90 degree on plaster frame

Listings

- cULus Listed for Damp Location
- cULus Listed for Feed Through
- Certified under ASTM-E283 for Air tight construction

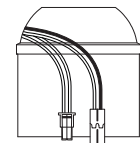
CONNECTOR

LED500SICA
Triac Dimming Ver.



Ideal connector

LED500SICA-01V
0-10V Dimming Ver.



Molex connector Ideal connector

ORDERING INFORMATION

Model No.	Dimming	Description
LED500SICA	Triac Dimming	5" IC Air-Tight Dedicated Shallow New construction Housing
LED500SICA-01V	0-10V Dimming	5" IC Air-Tight Dedicated Shallow New construction Housing

COMPATIBLE TRIMS

LED500SICA Model NO.	Description
LRKT56X Series	5&6 inch LED All Retrofit kit Series
LRKT54X Series	5 inch LED Square Retrofit kit Series
LRKT56X-3CCT Series	5&6 inch Selectable 3 CCT LED All Retrofit kit Series
LRKT54X-3CCT Series	5 inch Selectable 3 CCT LED Square Retrofit kit Series
LRKT56X-5CCT Series	5&6 inch Selectable 5 CCT LED All Retrofit kit Series
LRKT54X-5CCT Series	5 inch Selectable 5 CCT LED Square Retrofit kit Series

LED500SICA-01V Model NO.	Description
LRKT56X-5CCT-M Series	5&6 inch Selectable 5 CCT LED All Retrofit kit Series
LRKT54X-5CCT-M Series	5 inch Selectable 5 CCT LED Square Retrofit kit Series